

ABOUT YOUR DAQMETER DAQCARD-4050 SOFTWARE AND HARDWARE

This document guides you through the documentation you need to help you install the software and hardware included with your DAQMeter DAQCard-4050 digital multimeter kit.

Software Choices

Read the following flowchart to see what software options you have.

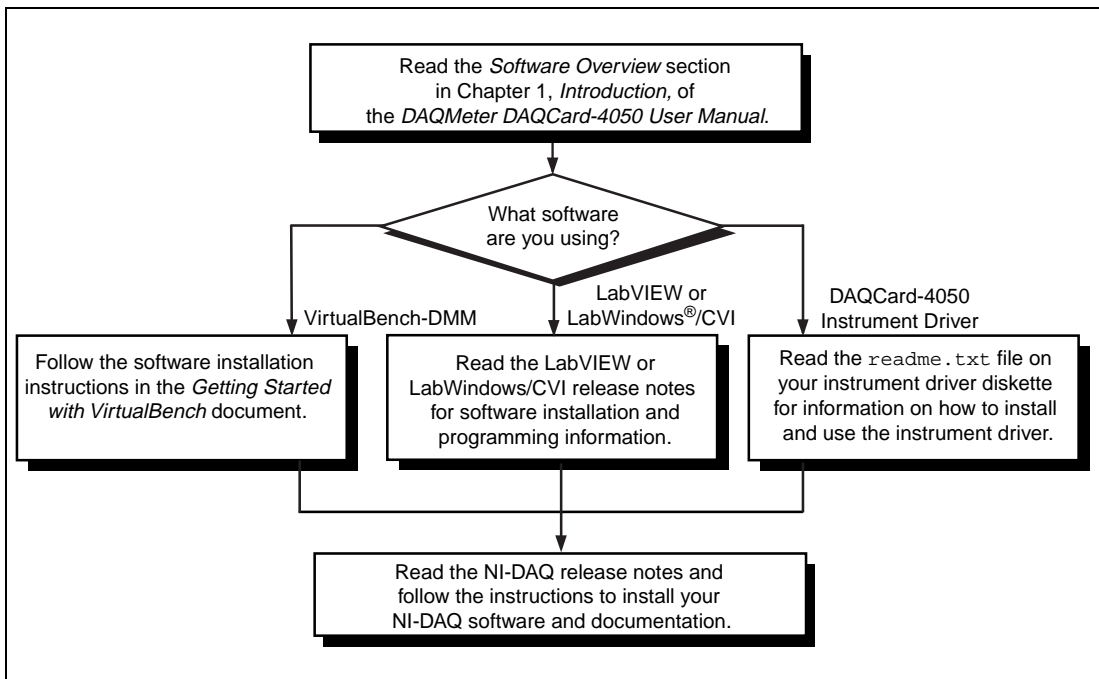


Figure 1. Installing Your DAQCard-4050 Software

Safety Instructions

When installing and using your DAQCard-4050, follow the safety instructions in Chapter 2, *Installation and Configuration*, of the *DAQMeter DAQCard-4050 User Manual*.

Hardware Installation

Refer to the following documents for installation instructions for these hardware components in your DAQCard-4050 kit:

- DAQCard-4050—You can find installation instructions in Chapter 2, *Installation and Configuration*, of the *DAQMeter DAQCard-4050 User Manual*.
- DAQCard-4050 accessory cable—You can find connection instructions in the *Cables and Probes* section of Chapter 2, *Installation and Configuration*, in the *DAQMeter DAQCard-4050 User Manual*.
- Banana jack probes—You can find connection instructions in the *Cables and Probes* section of Chapter 2, *Installation and Configuration*, in the *DAQMeter DAQCard-4050 User Manual*.



321469A-01
February 1997